



**Naval Facilities Engineering Systems Command,  
Marianas**  
PSC 455, Box 195  
FPO AP 96540-2937

**MILITARY RELOCATION TO GUAM AND CNMI  
PROGRAMMATIC AGREEMENT (PA) MEMO #1**

<p><b>Project:</b> P-309 Infantry Battalion Facilities; P-324 9<sup>th</sup> Engineer Support Battalion Headquarters; P-325 9<sup>th</sup> Engineer Support Battalion</p>	<p><b>Date:</b> February 2, 2022 <b>Comment Period Open Until:</b> March 20, 2022</p>
<p><b>Project Location:</b> United States Marine Corps Base Camp Blaz (MCBCB), Finegayan, Guam</p>	<p><b>Prepared By:</b> NAVFAC Marianas</p>
<p><b>PROJECT SUMMARY:</b></p>	
<p>This submittal is for three proposed “vertical” construction projects, for Infantry Battalion Facilities (P-309); 9<sup>th</sup> Engineer Support Battalion Headquarters (P-324); and 9<sup>th</sup> Engineer Support Battalion (P-325) at United States Marine Corps Base Camp Blaz (MCBCB), Finegayan, Guam (Figure 1). Vertical construction refers to the construction of buildings or structures. In locations with shallow soils, buildings and structures are typically built directly on top of bedrock following horizontal construction, or clear-cutting and leveling the ground to prepare for vertical construction. In areas with deeper soils, stable foundations, such as pilings or footings, must be constructed to support buildings.</p>	
<p>The construction is identified in Appendix E of the 2011 <i>Programmatic Agreement among the Department of Defense, the Advisory Council on Historic Preservation, the Guam State Historic Preservation Officer, and the Commonwealth of the Northern Mariana Islands State Historic Preservation Officer Regarding the Military Relocation to the Islands of Guam and Tinian</i> (2011 PA).</p>	
<p>The subject vertical construction projects are located within the J-001B Utilities and Site Improvements (U&amp;SI) project area. The construction location previously underwent mitigation for the J-001B U&amp;SI “horizontal” project, as stipulated by the 2011 PA. The J-001B U&amp;SI project consists of roads, drainage systems, water, wastewater, electrical, communications, security fencing, as well as earthwork activities such as vegetation clearance, grading, cutting/and filling. During this ongoing work, the Navy is conducting additional archaeological efforts consistent with the 2018 resolution agreement with Guam SHPO. Completion of clearing and grading work, and archaeological investigations will occur prior to vertical construction.</p>	
<p>In accordance with Stipulation IV.E.2.a., this PA Memo presents information to allow the Guam State Historic Preservation Officer (SHPO) to provide comments on the identification and evaluation of historic properties and the finding of effect.</p>	

**1** This PA Memo is required by Stipulation IV.E.2.a. of the PA as a means for interested members of the public to provide comments on the identification and evaluation of historic properties. Stipulation IV.E.1.b. of the PA requires the DoD to take into account comments received within 45 days of the date of the delivery of this PA memo to the SHPO and public notification via the CRI website.

**PROJECT LOCATION:**

All three projects are located within the J-001B U&SI Area of Potential Effects (APE), at MCBCB, Finegayan, Guam. The projects are on a mostly flat, uplifted limestone plateau. The majority of the interior of the island is comprised of Mariana Limestone.

The project area is located within the village or municipality of Dededo. Although the general area is now commonly referred to as Finegayan or North Finegayan, its pre-World War II name was Machanao.

The APE size for each project is listed below. See Figure 1 for APE depiction.

P-309 Infantry Battalion Facilities - 16.7 acres (ac)/6.75 hectares (ha)

P-324 9<sup>th</sup> Engineer Support Battalion Headquarters - 3 ac/ 1.2 ha

P-325 9<sup>th</sup> Engineer Support Battalion - 23 ac/ 9.3 ha

**PROJECT DESCRIPTION:**

The subject vertical projects include construction for three facilities. Project design and construction efforts include: geospatial surveys, grading and temporary erosion and soil control; pavement for roads, parking, driveways, site, and curbs and gutters; landscaping, fencing, concrete for sidewalks and ramps; electrical power, water (fire protection and potable), sewer, and storm water drainage systems; and possible munitions of explosive concern (MEC) removal. These tasks may require geotechnical borings of varying depths, mechanized excavation, placement of survey markers, and other similar activities.

*P-309 Infantry Battalion Facilities:* This project constructs low rise facilities to support two Infantry Battalions consisting of warehousing, electronics-communications maintenance shops, auto maintenance shops, three vehicle wash racks for organizational vehicles, two grease racks, and Operational Hazardous/Flammable Storage. This project will provide Anti-Terrorism/Force Protection (AT/FP) features that comply with AT/FP regulations.

Site preparation includes cavity probing and grouting at foundation locations and structural fill, fine grading, and temporary erosion control and soil control. Paving and site improvements consist of; pavement for road access, loading zones, curbs, gutters, parking, landscaping, security bollards, concrete for sidewalks and ramps, entry control point/dispatch facilities, pedestrian and chain link fence, and gates.

Electrical utilities include primary and secondary electrical distribution systems, a transformer with protective enclosure, security lighting, area lighting, and a telecommunications distribution system. Mechanical utilities include a water distribution system, sanitary sewer, fire pump building, and storm water drainage system. The ground improvements will include a drainage system, grass swales, infiltration basin, pollution removal devices, and injection wells.

---

**2** This PA Memo is required by Stipulation IV.E.2.a. of the PA as a means for interested members of the public to provide comments on the identification and evaluation of historic properties. Stipulation IV.E.1.b. of the PA requires the DoD to take into account comments received within 45 days of the date of the delivery of this PA memo to the SHPO and public notification via the CRI website.

*P-324 9th Engineer Support Battalion Headquarters:* This project constructs permanent low-rise structure that will provide Antiterrorism (AT) features. Primary facilities consist of an administration building with battalion / squadron headquarters and company / battery headquarters. The building includes private and open offices, meeting rooms and miscellaneous support spaces.

Site preparation includes probing and grouting below building foundations, earthwork and site demolition. Paving and site improvements include asphaltic concrete (AC) access roads, circulation, and parking facilities, Portland cement concrete (PCC) sidewalks, concrete retaining walls, and landscaping.

Electrical utilities include primary and secondary electrical distribution systems, an electrical transformer, telecommunications infrastructure and site lighting. Mechanical utilities include potable water distribution system, fire water distribution system, sanitary sewer system, sanitary sewer lift station, storm drainage system and storm drainage culvert.

*P-325 9th Engineer Support Battalion:* The project will construct a permanent vehicle laydown area with PCC pavement with ancillary low-rise structures and a shallow foundation system. Additional primary facilities consist of:

- Automobile organizational shop building with an automotive organizational shop and construction/weight handling equipment shop. The building will include service bays, direct support spaces, administrative support spaces storage and miscellaneous support spaces.
- Electrical / communications maintenance shop building with an electrical/communications maintenance shop, a woodworking shop, a boat maintenance shop, an academic training facility and a refueling vehicle shop. The maintenance building will include service bays, direct support spaces, administrative support spaces, storage, woodworking equipment spaces with workbenches, training classrooms and miscellaneous support spaces.
- Storage of air or ground organic units building with organic storage and general storage. The building includes enclosed storage, a covered area for boat storage and support spaces.
- Vehicle wash rack facility with two elevated and two on-grade vehicle wash rack platforms, and two prewash baths.

Site preparation includes probing and grouting below building foundations and proof rolling, temporary erosion control measures, earthwork, cut/fill, and site grading and soil management.

Paving and site improvements include a mechanical yard, PCC driveway aprons, PCC pavement, concrete sidewalks, chain link fencing and gates, retaining walls, sediment basins #1 and #2, sediment drying basin / racks, storm water retention pond, infiltration trenches and mechanical filtration, landscaping, and AT/FP (outside) features including bollards.

---

**3** This PA Memo is required by Stipulation IV.E.2.a. of the PA as a means for interested members of the public to provide comments on the identification and evaluation of historic properties. Stipulation IV.E.1.b. of the PA requires the DoD to take into account comments received within 45 days of the date of the delivery of this PA memo to the SHPO and public notification via the CRI website.

Electrical utilities include a transformer enclosure, primary and secondary electrical distribution systems, electrical transformers, telecommunication infrastructure and site lighting. Mechanical utilities include potable water distribution system, fire water distribution system, sanitary sewer system, sanitary sewer lift stations, storm drainage system, oil water separator, chilled water distribution system, prewash water storage tank and wash water storage tank.

#### **IDENTIFICATION OF HISTORIC PROPERTIES:**

Stipulation IV of the 2011 PA describes the overall efforts taken to identify historic properties, including archival research, oral studies, and interviews. Archaeological surveys have been conducted for the vast majority of the project-specific APEs. Enclosure 1 is a list of references for historic property/archaeological identification efforts in and near the APEs. Regulations do not require survey of an entire APE or identification of all historic properties, and 36 CFR Part 800.4(b)(1) states that a reasonable and good faith effort to carry out appropriate identification efforts shall be made. The 2011 PA directs the PA Memo process to allow for members of the public to provide input on the identification and evaluation of historic properties. The input sought by the process is knowledge on specific historic properties not yet identified by previous efforts, and assistance in identifying issues relating to effects of the project on historic properties.

Figure 2 illustrates the scope of survey efforts to identify historic properties. The P-324 and P-325 APEs contain archaeological discovery areas J-001B-002, J-001B-009, J-001B-010, and J-001B-011 (i.e., Areas 2, 9, 10, and 11) and four areas with human remains (i.e., HR-12, HR-20, HR-22, and HR-25), identified during archaeological monitoring for the J-001B U&SI project.

Consultation is currently ongoing with the Guam SHPO regarding the final disposition of the above mentioned human remains loci (i.e., preservation in place or reburial at the Marine Corps Base Camp Blaz Memorial). Although the details for the project footprint design are not known at this time, consultation is being completed because the APE covers all possibilities for design. As such, if the decision is made for preservation in place, the P-324 and P-325 project footprints will be designed to accommodate the protection of these remains. These locations will be secured, no construction work will occur at these areas, and there will be no impact to the remains. In addition, archaeological investigations have been conducted to execute the agreed upon mitigative work in order to collect data that will characterize these sites prior to the commencement of the subject vertical construction. The discovery areas that are present within the APEs will no longer be extant once mitigation is complete (i.e., qualifying characteristics will have been altered and the integrity diminished). Consistent with 36 CFR Part 800.4(d)(1), no historic properties present within the APE denotes a “no historic properties affected” finding. The Guam SHPO is provided additional information on historic properties in Figure 3.

In accordance with Stipulation VI.F. of the PA, the DoD has retained a full-time Archaeologist to provide site checks, oversee coordination and execution of the archaeological mitigation measures in the PA and to provide quality control. This individual is on-staff at Camp Blaz, and is designated to respond to and report any inadvertent discoveries to the Signatories, Invited Signatories, and Concurring Parties per Stipulation XII of the PA. The 2018 resolution agreement

---

**4** This PA Memo is required by Stipulation IV.E.2.a. of the PA as a means for interested members of the public to provide comments on the identification and evaluation of historic properties. Stipulation IV.E.1.b. of the PA requires the DoD to take into account comments received within 45 days of the date of the delivery of this PA memo to the SHPO and public notification via the CRI website.

also requires the Department of the Navy (DON) to notify the Guam SHPO of any new discoveries and evaluate these discoveries to assess effects.

**FINDING OF EFFECT:**

As aforementioned, mitigation in accordance with the 2011 PA has been completed for the J-001B U&SI project. The Navy's ongoing mitigation consistent with the 2018 resolution agreement will conclude prior to vertical construction. The combined efforts under each agreement address direct and indirect effects to qualifying characteristics of historic properties. The DoD finds that the subject construction will have no historic properties affected because while historic properties have been identified in the APEs, the properties will no longer retain integrity and will have had qualifying characteristics altered. Thus, vertical construction will have no effect upon them as defined in § 800.16(i). PA Memo #2 will not be required as there will be no further mitigation.

---

**5** This PA Memo is required by Stipulation IV.E.2.a. of the PA as a means for interested members of the public to provide comments on the identification and evaluation of historic properties. Stipulation IV.E.1.b. of the PA requires the DoD to take into account comments received within 45 days of the date of the delivery of this PA memo to the SHPO and public notification via the CRI website.

Enclosure 1: Identification and evaluation efforts in the vicinity of, and including the APEs in accordance with 36 CFR §800.4(b)(1).

Athens, J.S.

2009 *Archaeological Surveys and Cultural Resources Studies on Guam and the Commonwealth of the Northern Mariana Islands in Support of the Joint Guam Build-Up Environmental Impact Statement Volume I: Guam*. Prepared for Naval Facilities Engineering Command, Pacific Division, Pearl Harbor, Hawaii. International Archaeological Research Institute, Inc. Honolulu, Hawaii.

Church, M., J. Hokanson, J. Gallison, and M. Jennings

2009 *Cultural Resources Survey of 297 Acres at Andersen Air Force Base, Guam*. Prepared for Andersen Air Force Base, Guam. Engineering-Environmental Management, Inc., Englewood, Colorado.

Dixon, Boyd, S. Walker and R. Schaefer

2011 *Cultural Resource Investigations Conducted in the Territory of Guam Supporting the Joint Guam Build-Up Environmental Impact Statement: Final Archaeological Surveys on Guam 2008-2009 at Air Force Barrigada, Proposed Live Fire Training Range, Andersen South, and Naval Base Guam*. Prepared for Naval Facilities Engineering Command, Pacific Division, Pearl Harbor, Hawaii. TEC Inc., Honolulu, Hawaii.

Dixon, B. and S. Walker

2011 *Cultural Resource Investigations Conducted in the Territory of Guam Supporting the Joint Guam Build-Up Environmental Impact Statement: Final Archaeological Surveys on Guam 2009 at Proposed Utility Sites, Harmon Property, and Andersen AFB*. Prepared for Naval Facilities Engineering Command, Pacific Division, Pearl Harbor, Hawaii. TEC Inc., Honolulu, Hawaii.

Dixon, B., T. Rudolph, A. Jalandoni, I. Nelson, M. Hroncich-Conner, S. Leary, R. Schaefer, E. Lash, M. Todd

2015 *Proposed Guam and CNMI Military Relocation 2012 Roadmap Adjustments SEIS Live-Fire Training Range Complex Footprints, Main Cantonment, Utilities, Communications, Well Field Alternatives and Access Route Options Volume I: Potential Direct Impact Area In-Fill Cultural Resources Study Narrative*. Prepared for Naval Facilities Engineering Command Pacific, Pearl Harbor, Hawaii. Cardno TEC, Inc., Honolulu, Hawaii.

Dixon, B., T. McCurdy, R. Shaefer, R. Jones, I. Nelson

2016 Andersen Air Force Base, Guam, National Historic Preservation Act Section 110 Cultural Resources Identification and Evaluation Studies. Prepared for Naval Facilities Engineering Command Pacific, Pearl Harbor, Hawaii. Cardno TEC, Inc., Honolulu, Hawaii.

This PA Memo is required by Stipulation IV.E.2.a. of the PA as a means for interested members of the public to provide comments on the identification and evaluation of historic properties. Stipulation IV.E.1.b. of the PA requires the DoD to take into account comments received within 45 days of the date of the delivery of this PA memo to the SHPO and public notification via the CRI website.

Dixon, B., D. Welch, T. Rudolph, R. Jones, and I. Nelson

2018 *Final Technical Report: Archaeological Data Recovery in Support of the J-0001B Utilities and Site Improvements at Naval Base, Guam Telecommunications Site, Guam.* Prepared for Naval Facilities Engineering Command, Pacific Division, Pearl Harbor, Hawaii. TEC Inc. and the University of Guam. (GIS data labeled 2017).

Eakin, J., K. Higelmire and D. DeFant

2012 *Archaeological Data Recovery Report Guam Military Relocation MILCON Projects P-100 (North Ramp Utilities) and P-101 (North Ramp Parking), Andersen Air Force Base, Territory of Guam.* Prepared for Department of the Navy, Naval Facilities Engineering Command, Pacific, Pearl Harbor, Hawaii. Southeastern Archaeological Research, Inc. (SEARCH).

Haun, A.E.

1988 *Archaeological Reconnaissance Survey and Field Inspections of Relocatable Over-the-Horizon Radar Sites on Guam, Mariana Islands, Micronesia.* Prepared for Wilson Okimoto and Associates, Inc., Honolulu, Hawaii. Paul H. Rosendahl, PhD, Inc., Hilo, Hawaii.

Highness, D. and A. Haun

1990 *Archaeological Inventory Survey DTS Facility: Barrigada and Finegayan Sites, Dededo and Barrigada Municipalities, Territory of Guam.* Prepared for Belt, Collins, & Associates, Inc., Honolulu, Hawaii. Paul H. Rosendahl, PhD, Inc., Hilo, Hawaii.

Hokanson, Jeffrey H., J. David Kilby, Michael Church and Mary R. McCurdy

2008 *Cultural Resources Survey for a Perimeter Fence and Portions of the Munitions Storage Area, Andersen Air Force Base, Guam.* Prepared for Andersen Air Force Base. Engineering-environmental Management, Inc., Englewood, Colorado.

Kurashina, H., T. McGrath, and H. Manner

1987 *Archaeological Survey of Areas 1, 2, 1-A and 2-A at Northwest Field, Andersen Air Force Base and Naval Communication Area Master Station Western Pacific, Finegayan, Guam, Marianas Islands.* Prepared for Naval Facilities Engineering Command, Pacific, Pearl Harbor, Hawaii. Micronesian Area Research Center, University of Guam, Mangilao, Guam.

Pacheco, T., T. Rieth, and R. DiNapoli

2020 *Archaeological Monitoring in Support of Finegayan Utilities and Site Improvements Phase I, Naval Computer and Telecommunications Station, Guam.* 4 Volumes. Prepared for Department of the Navy, Pacific Division, Naval Facilities Engineering Command, Pearl Harbor, Hawaii. International Archaeological Research Institute, Inc., Honolulu, Hawaii.

Welch, D.

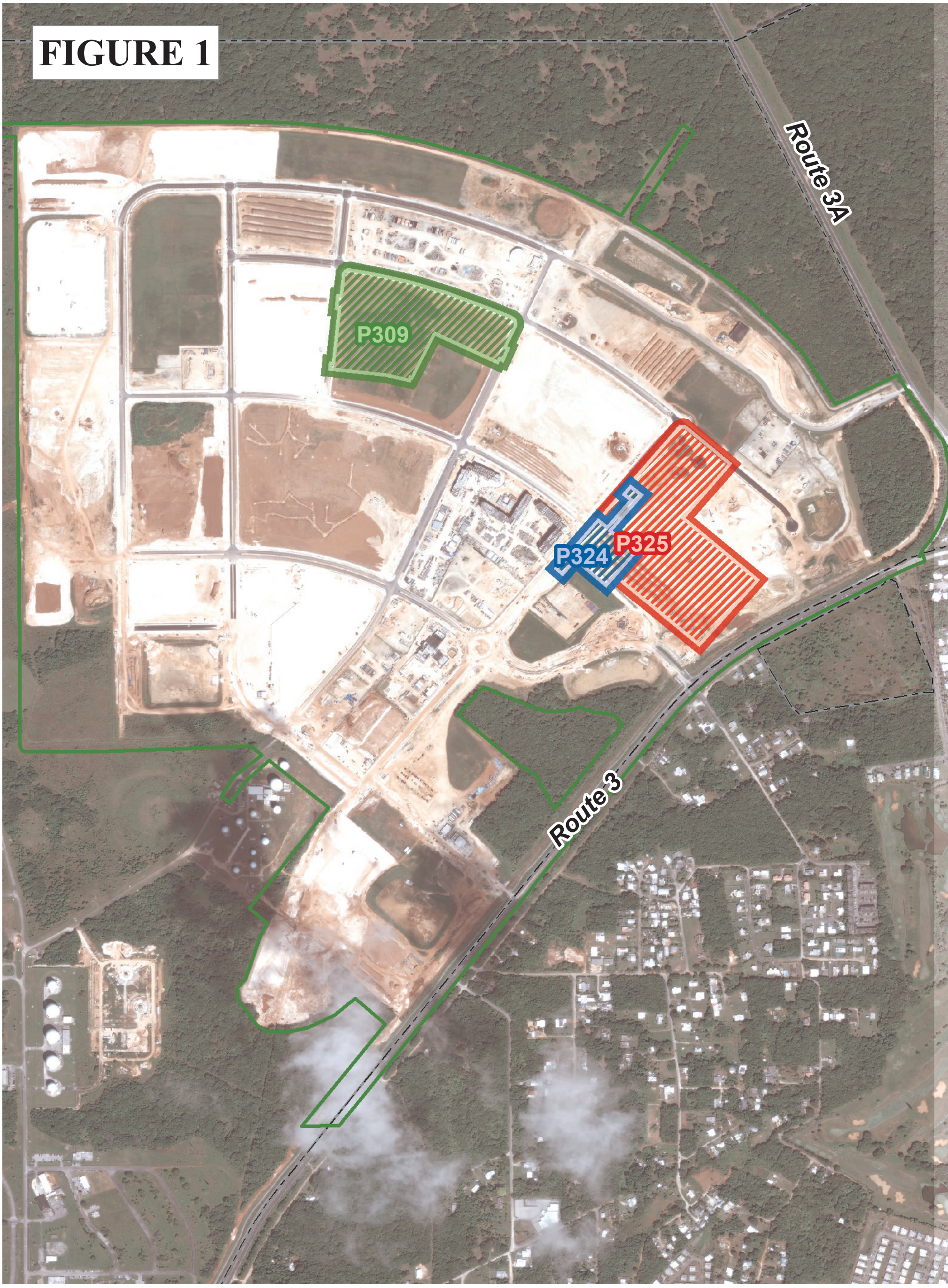
This PA Memo is required by Stipulation IV.E.2.a. of the PA as a means for interested members of the public to provide comments on the identification and evaluation of historic properties. Stipulation IV.E.1.b. of the PA requires the DoD to take into account comments received within 45 days of the date of the delivery of this PA memo to the SHPO and public notification via the CRI website.

2010 *Archaeological Survey and Cultural Resource Studies Conducted in 2007 on the Island of Guam in Support of the Joint Guam Build-Up Environmental Impact Statement*. 2 volumes. Prepared for Department of the Navy, Pacific Division, Naval Facilities Engineering Command, Pearl Harbor, Hawaii. International Archaeological Research Institute, Inc., Honolulu, Hawaii.

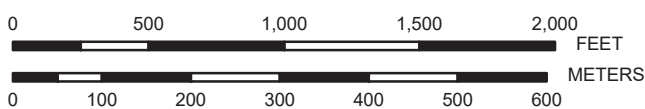
This PA Memo is required by Stipulation IV.E.2.a. of the PA as a means for interested members of the public to provide comments on the identification and evaluation of historic properties. Stipulation IV.E.1.b. of the PA requires the DoD to take into account comments received within 45 days of the date of the delivery of this PA memo to the SHPO and public notification via the CRI website.



# FIGURE 1



**Camp Blaz - MILCON Projects and J-001B APE  
Stage 2 - PA Memo - Construction Area**



PREPARED BY:  
Naval Facilities Engineering Command Pacific Division  
Guam Program Management Office  
DATE: 20 Jan 2022





Coordinate System: Geographic  
Projection: N/A  
Datum: D WGS 1984

**Legend**

**MILCON**

**Project Areas (APE)**

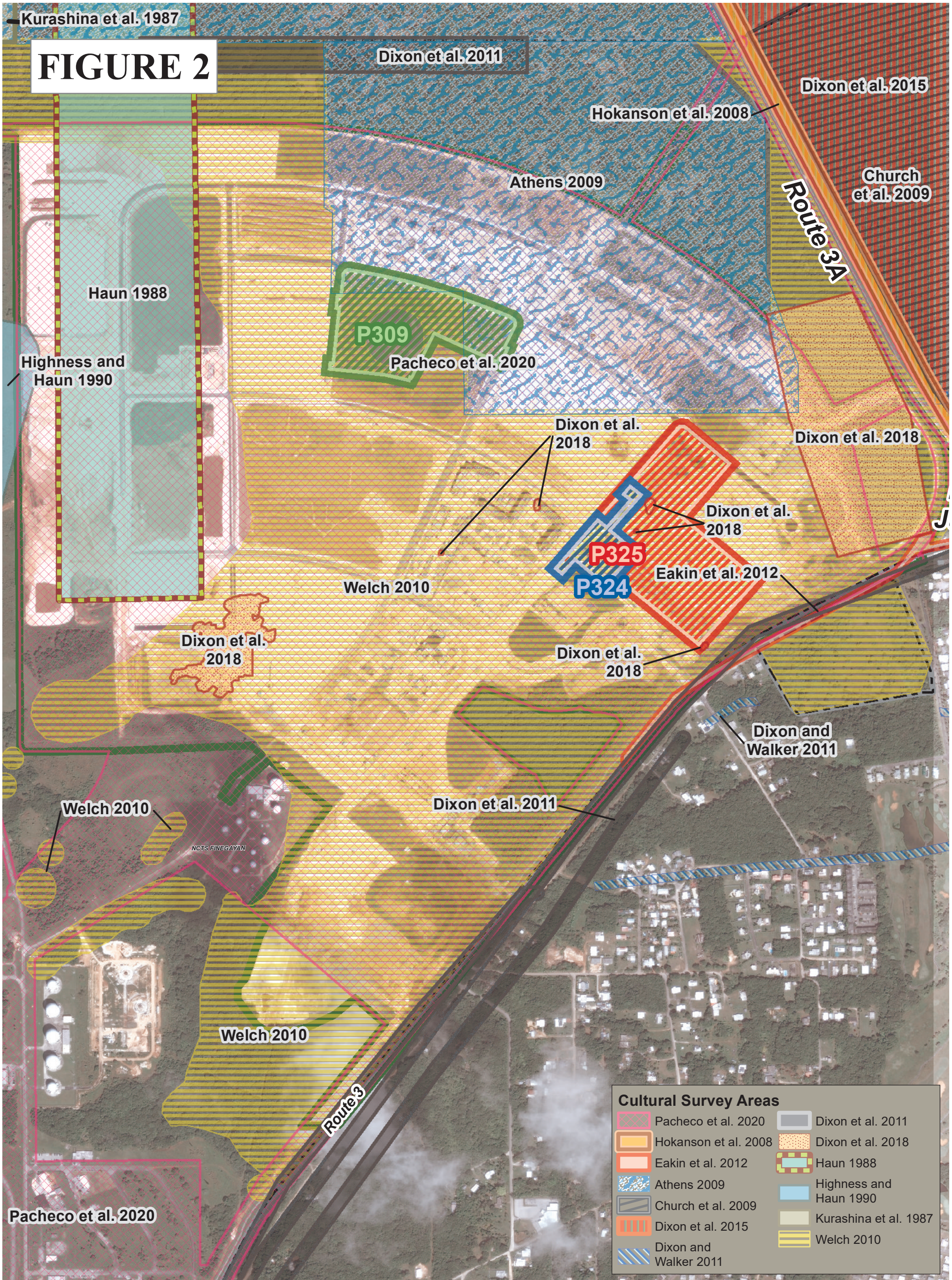
-  P309
-  P324
-  P325

-  J-001B (U&SI) Construction Footprint
-  Military Installations



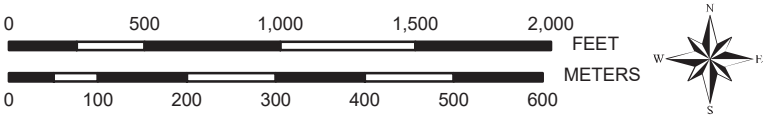
**MILCON APE**  
P309 - 16.7 ac.  
P325 - 23 ac.  
P324 - 3 ac.

# FIGURE 2



Cultural Survey Areas	
	Pacheco et al. 2020
	Hokanson et al. 2008
	Eakin et al. 2012
	Athens 2009
	Church et al. 2009
	Dixon et al. 2015
	Dixon and Walker 2011
	Dixon et al. 2011
	Dixon et al. 2018
	Haun 1988
	Highness and Haun 1990
	Kurashina et al. 1987
	Welch 2010

## Camp Blaz - MILCON Projects and J-001B APE Stage 2 - PA Memo - Survey Areas



PREPARED BY:  
Naval Facilities Engineering Command Pacific Division  
Guam Program Management Office



DATE: 20 Jan 2022

Coordinate System: UTM Zone 55 North  
Projection: Transverse Mercator  
Datum: D WGS 1984

### Legend

- MILCON Project Areas (APE)**
- P309
  - P324
  - P325
- Other Symbols:**
- J-001B (U&SI) Construction Footprint
  - Military Installations



Date: 1/20/2022 Time: 9:56:01 AM Path: C:\Users\laaron.pulliam\OneDrive - US Navy\flankspeed\Documents\GIS Projects\WXP\PAStage 2\20220105\PA MEMO\_CampBlaz\_MAMIZU\_MILCON\_Stage2\_CulturalSurveys - Figure 2\_20220105.mxd

# Military Relocation PA Memo Comment Form

2022

If submitting via **e-mail**, scan and send to: [criwebcomment@navy.mil](mailto:criwebcomment@navy.mil)

If submitting via **postal mail**, send to:

Attn: CRI Web Comments  
Code EV23, NAVFAC Pacific  
258 Makalapa Drive, Suite 100  
JBPHH, Hawaii 96860-3134

Submitted comments will be posted on the Navy's Cultural Resources Information (CRI) web site. Information presented on the CRI web site is considered public. The sections outlined in **red** are required to be completed in order for a comment to be posted.

## Privacy Act Statement

Personal information will only be used to contact you regarding the comments you submit. This information will only be shared with another government agency if your inquiry relates to that agency, or as otherwise required by law. We will not create individual profiles or give your information to any private organization. While you must provide a valid e-mail address or postal address, please **DO NOT** include personally identifying information such as a social security number.

By submitting this comment form, you agree not to include content that is offensive in nature, such as profanity, personal attacks on individuals, and racist or abusive language.

**PROJECT: Combined MILCON Vertical Projects - Stage 2**

**SUBJECT: PA Memo # 1, P-309 Infantry Battalion Facilities; P-324 9th Engineer Support Battalion Headquarters; P-325 9th Engineer Support Battalion, United States Marine Corps Base Camp Blaz (MCBCB), Finegayan, Guam**

**Date:** \_\_\_\_\_

**Name:** \_\_\_\_\_

**CRI User Name** (if you don't want your real name to be posted with your comment on the CRI web site):

\_\_\_\_\_

**E-Mail Address:** \_\_\_\_\_

**and/or**

**Postal Mail Address:** \_\_\_\_\_

**COMMENTS:** \_\_\_\_\_

\_\_\_\_\_

\_\_\_\_\_

\_\_\_\_\_

\_\_\_\_\_

\_\_\_\_\_

